

Updates on the Student Perception of Instruction Process at UCF: Can We Improve It?

Chuck Dziuban, Research Initiative for Teaching Effectiveness
Patsy Moskal, Digital Learning Impact Evaluation
Bill Self, Burnett School of Biomedical Sciences
Martha Hubertz, Psychology

The FCTL's Background with UCF's Student Perception of Instruction



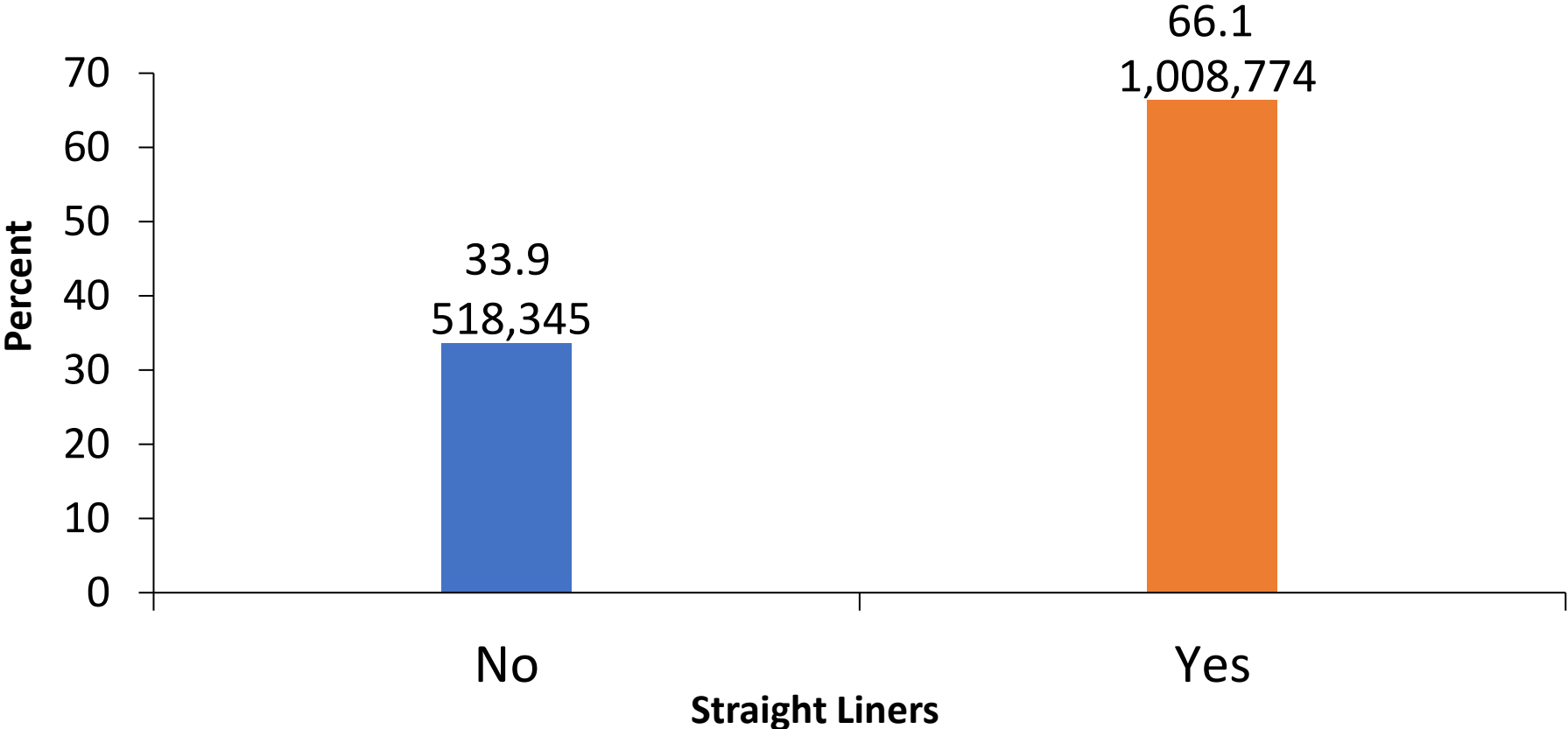
In the 1995-1996 cycle, there was a review of the SPI that identified the primary purpose of the instrument as providing “feedback to faculty to improve teaching effectiveness.” The same resolution called for the establishment of the “Teaching Learning Center” to “assist faculty in enhancing teaching effectiveness.” But there had been a form in place for a number of years.

Before SPI there was a “Student Perception of Faculty Form” and before that it was referred to the “Student Evaluation of Faculty Form” or SEFF.

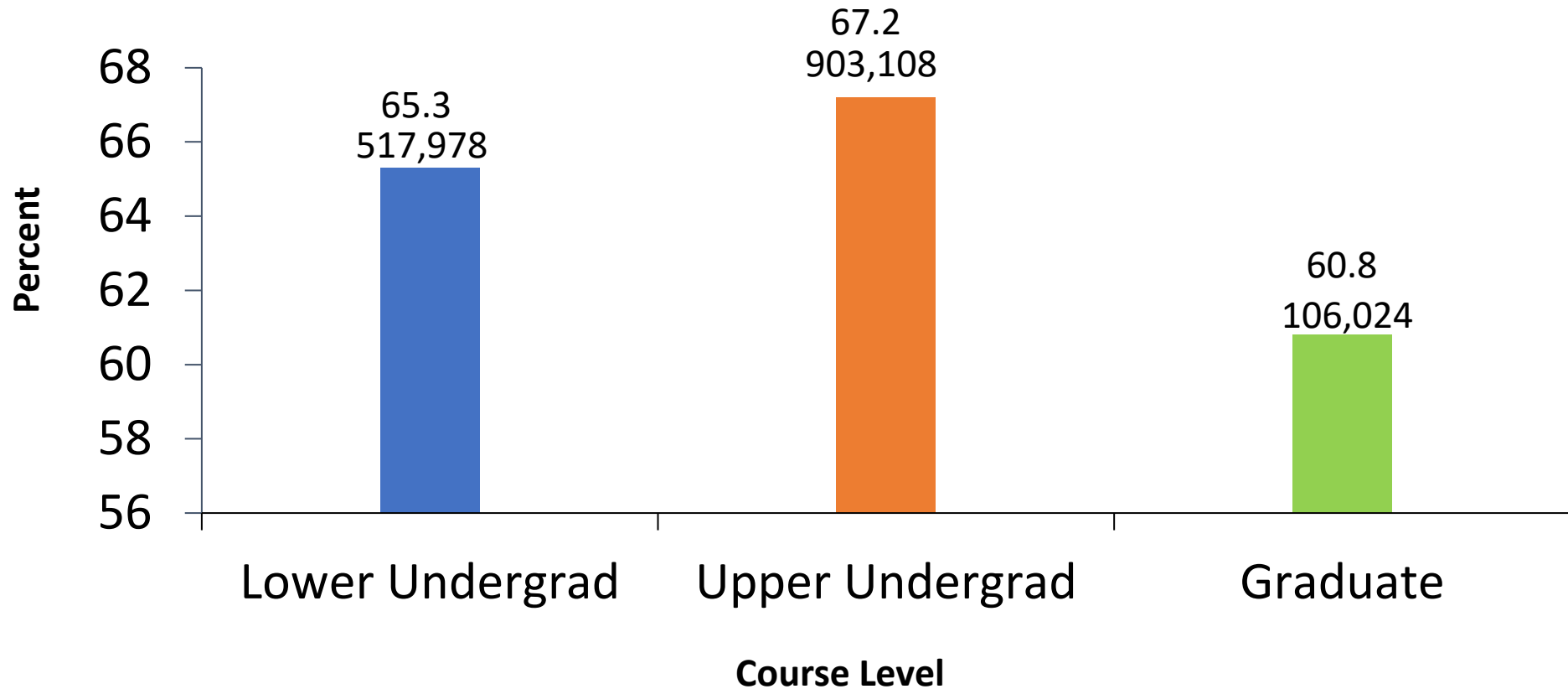
UCF Student Responses to the SPI Fall 2017- Spring 2021



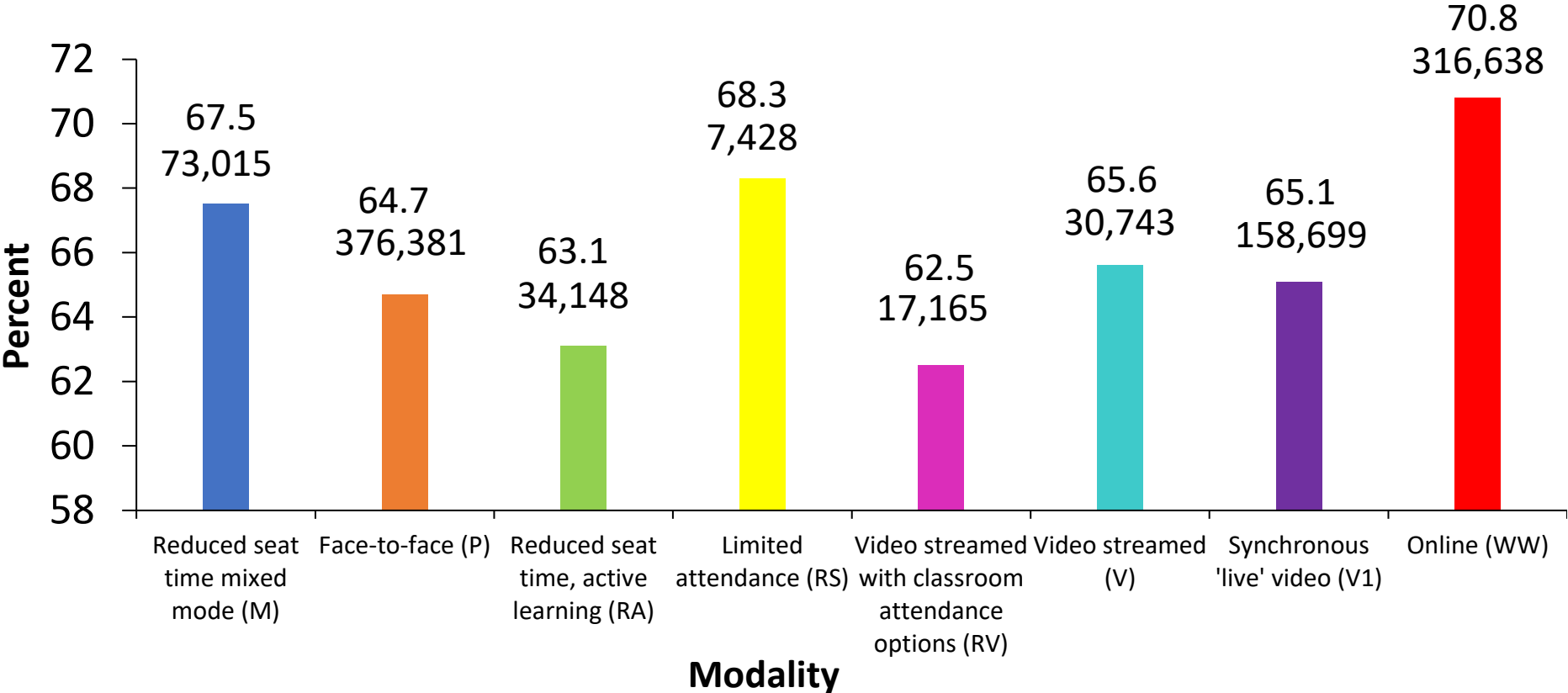
Percentage of Students Who Responded Identically (straight liners) for the 2017-2021 SPI



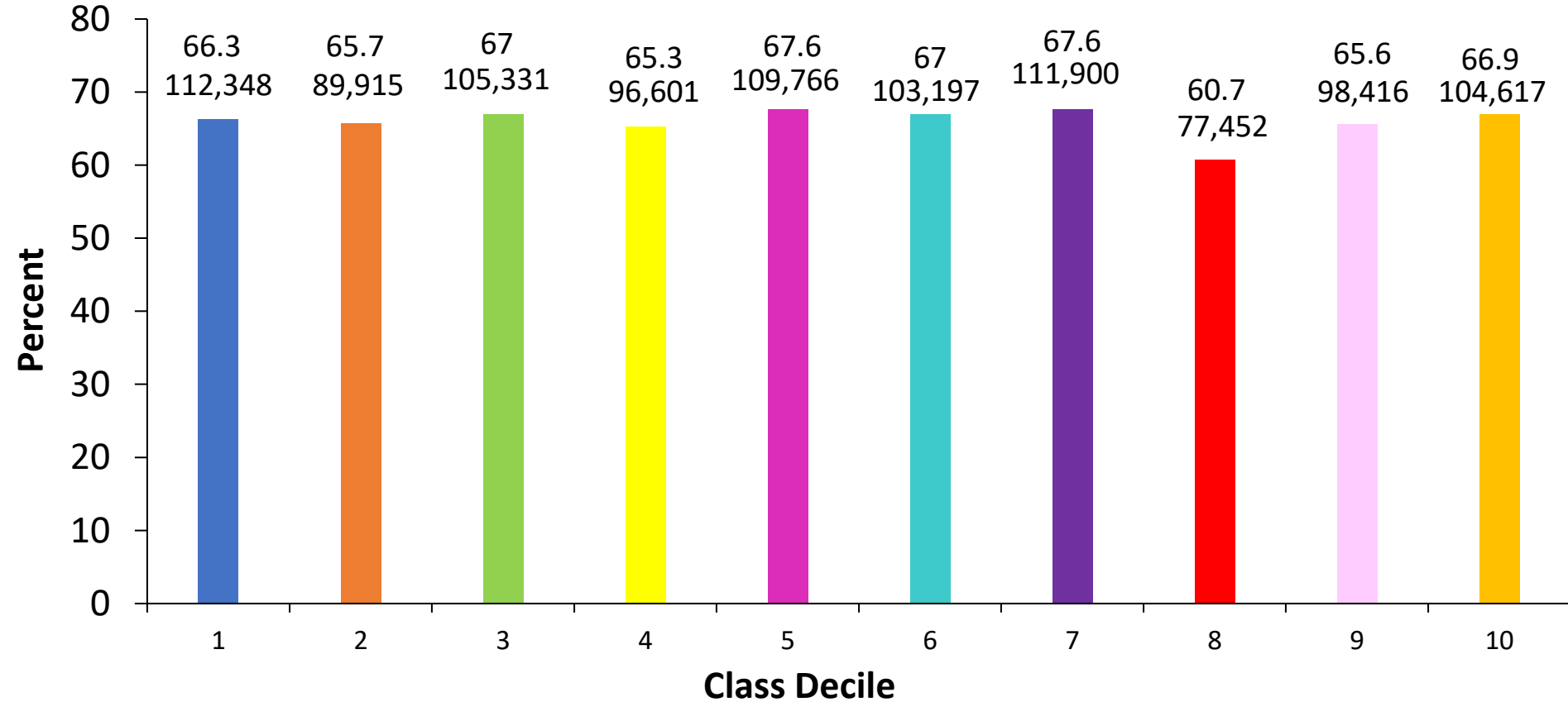
Percentage of Students by Course Level Who Responded Identically (straight liners) for the 2017-2021 SPI



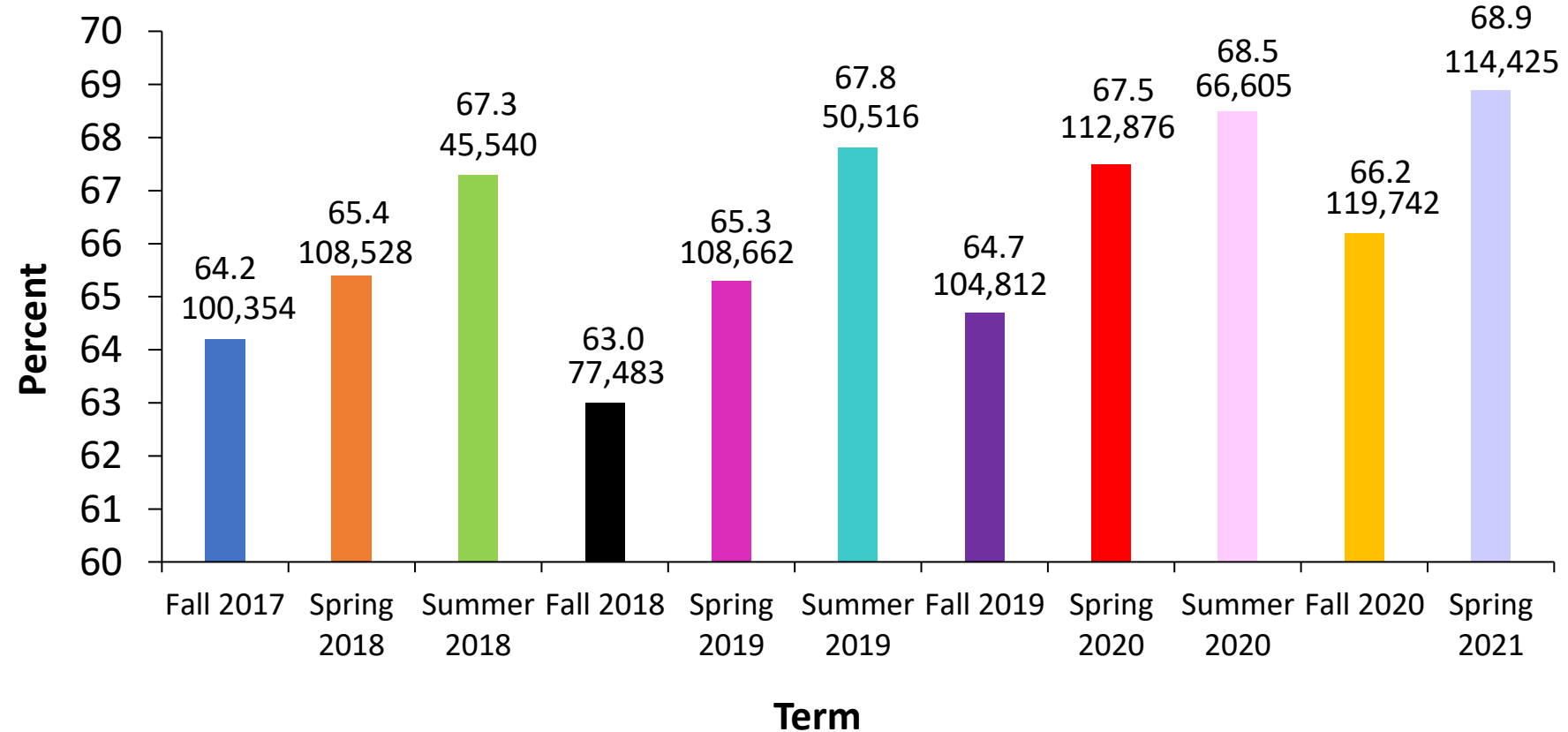
Percentage of Students by Course Modality Who Responded Identically (straight liners) for the 2017-2021 SPI



Percentage of Students by Class Decile Who Responded Identically (straight liners) for the 2017-2021 SPI



Percentage of Students by Term Who Responded Identically (straight liners) for the 2017-2021 SPI



SPI Administration Process

The UCF SPI Process

- Under purview of Faculty Excellence
- Students emailed **2 weeks prior to end** of classes
- Students access through **MyUCF Portal** (online)
- 9 multiple choice, 2 free response items
- Excellent, Very Good, Good, Fair, Poor scale
- Faculty receive results after semester grades are due
- For form items and to access historical SPI data:
<https://it.ucf.edu/our-services/test-scoring/student-perception-of-instruction/>

UCF SPI: Student Invitation

From: Student Evaluation Administration

Sent: Sunday, April 10, 2022 2:08 AM

To: UCF Student

Subject: Evaluate Your Faculty Online

Student evaluation of course instruction (SPI) forms will be available online for the next 15 days or until 7:00 am on the day that the final exam period begins (whichever comes first). The online questionnaire includes ONLY eleven (11) questions (9 multiple choice and 2 open comment questions.)

Your answers and comments are collected separate from each course and, the process has been designed so that results are anonymous, presented in summary form, and CANNOT be viewed by your professor until AFTER grades are posted.

All evaluations are online and may be accessed via Student Self-Service through the myUCF portal.

When you login to <https://my.ucf.edu> and navigate to the Student Self-Service/Student Center link, a list of courses in which you are enrolled will appear.

Click on the "Evaluate" button next to each course listed and the online form will open.

After you submit your responses for a course, the system will return to the list of courses.. You do not have to complete the evaluations for all of your classes at the same time, however, MyUCF will continue to remind you until you have completed the evaluations for ALL of your courses.

Warning: Once you select the option to begin the evaluation for a course, you must complete and submit it. You cannot save the form and submit it later. Submission of the evaluation form is final.

If you have difficulty accessing the form or do not see the option to access and fill out your evaluations, please contact the Service Desk at 407-823-5117, or by e-mail at servicedesk@ucf.edu. You can also contact them via the web at <http://servicedesk.ucf.edu>.

Remember, instructors cannot see the anonymous results or comments until AFTER grades are posted.



UCF SPI: Student View

Student Perception of Instruction

The student perception of instruction form is administered during the last fifteen days of the class. Please provide constructive and thoughtful responses to the questions.

Responses cannot be viewed by your instructor until all grades have been submitted. All submissions are anonymous.

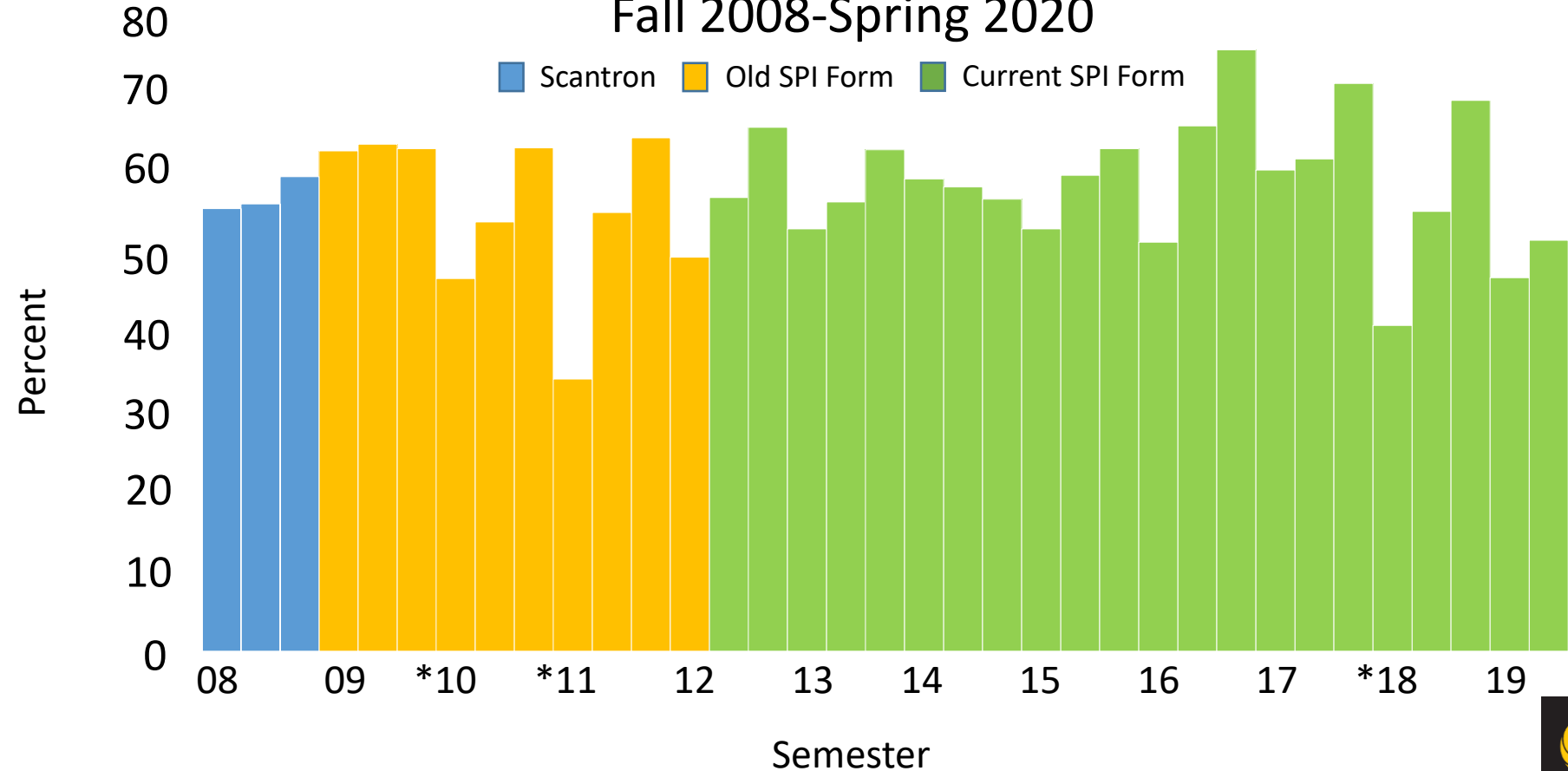
Warning: Once you select the option to begin a student perception of instruction form for a course, you must complete and submit it. You cannot save the form and edit it later.

Term	Subject	Catalog Nbr	Section	Course Title	Name	Class End Date	Evaluate
1740	RED	5147	0W61	DEVELOPMENTAL READING	Zygouris-Coe,Vassiliki I	05/03/2022	<button>Evaluate</button>
1740	SPS	6191	0M01	INDIV PSYCHOED DIAGNOSIS I	Lawson,Sarah Noelle	05/03/2022	<button>Evaluate</button>
1740	SPS	6194	0M01	ASSESSMENT OF SPECIAL NEEDS	Lawson,Sarah Noelle	05/03/2022	<button>Evaluate</button>
1740	EEX	6218	0M01	DIAGNOS ASSESS & INTERVENTION	Slanda,Dena Dillenseger	05/03/2022	<button>Evaluate</button>

- Academic Resources
- Staff Applications
- Student Self Service
 - Personal Information
 - Holds & To Dos
 - Student Records
 - Graduate Students
 - International Students
 - Undergraduate Admission
 - Student Accounts
 - Financial Aid
 - Scholarship Application
 - Housing
 - Dining Services
 - User Settings
 - Placement Test Self-Enrollment
 - Student Center
- Employee Self Service
- Manager Self Service
- Faculty/Advisor Self Service
- My Content
- Reporting Tools
- Change my NID Password

Submitted SPIs With At Least One Item Completed

Fall 2008-Spring 2020



* System bug impacted responses

Comparing Student Evaluations Across the Florida SUS

USF: there does not appear to be a central link for this. There is a student FAQ: <https://www.usf.edu/ods/documents/fdra/courseevaluationfaq.pdf> AND a Faculty Center (CITL) site: https://www.usf.edu/ods/data-tools/st_assessment.aspx AND some colleges have sites.

Online? Yes. Seems to be email sent to students

Not forced response

Mobile Friendly: Not clear

Justification for evaluation included? Yes

Faculty instructions to increase response rate? Yes

Suggested Syllabus Language? Yes

Open Period: 2-week window

*Closing Date: The open period ends at midnight on the last day of class.

*Faculty Availability: Course Evaluation reports are sent 2 weeks after the semester ends.

Can students go back and change answers? Doesn't say

Process: The evaluation process is as follows: 1) Students will be notified through email and Canvas that they have evaluations available for completion. 2) A series of three emails will be sent to all students at their USF email address: an initial invitation and two follow up messages Addressees the shift from paper to online response rates.



FAU: <https://www.fau.edu/spot/>



Online? Yes. And can be done in class online

Not forced response

Mobile Friendly: “Yes, the SPOT is mobile friendly. Please note that some faculty may ask you to complete the SPOT in class using your smartphone.”

Justification for SPOT included? Yes

Faculty instructions to increase response rate? Yes

Suggested Syllabus Language? No

Open 1 week – Monday through Sunday.

*Closing Date: Sunday before the beginning of the final exam period

* Faculty Availability: SPOT reports are sent 4-5 weeks after the semester ends.

Can students go back and change answers? No, once a SPOT is submitted, it is no longer available.

Uses a reverse score item

Process: Click the "CLICK HERE" hyperlink on the FAU SPOT home page. You must log in using your FAU ID and password. This information is NOT submitted as part of the feedback data. All surveys are anonymous

Addressees the shift from paper to online response rates

FSU: <https://odl.fsu.edu/assessment-testing/course-evaluations> Faculty FAQ: <https://support.testing.fsu.edu/kb/article/1476-course-evaluation-faqs/>

Online? Yes. And it looks like they also have [a paper option](#)

Not forced response

Mobile Friendly: Doesn't say

Justification for Course Evaluation included? Yes

Faculty instructions to increase response rate? Yes

Suggested Syllabus Language? No

Customizable? Yes

Open around 2.5 weeks

*Closing Date: Friday before the beginning of the final exam period

*Faculty Availability: reports are sent 2 weeks after the close date.

Can students go back and change answers? Doesn't say

Process: Students receive email notifications and login prompts in Canvas (FSU's learning management system) when the evaluation window opens. If students don't complete a course survey, reminder emails will continue throughout the open window.

Addressees the shift from paper to online response rates



Assessment & Testing
SUPPORT CENTER

FIU: <https://opir.fiu.edu/spotspolicy.htm> Faculty guide:
<https://opir.fiu.edu/evals/Student%20Perceptions%20of%20Teaching%20Survey%20Guide.pdf>

Online? Yes. **Not forced response**

Mobile Friendly: Yes can be taken on the app – encouraged to use class time: “Class time should be provided to students to complete the SPOTs”

Justification for Course Evaluation included? A little

Faculty instructions to increase response rate? No

Suggested Syllabus Language? No

Customizable? I don’t see that

Open: 2 weeks

* “SPOTs evaluations will open 5 weeks prior to the last day of class and close 3 weeks later (12 days from the last day of the course as indicated on Panthersoft). This will accommodate the College's reading and exam”

*Closing Date: 12 days from the last day of the course

* Faculty Availability: reports are sent the day after grades are due.

Can students go back and change answers? Doesn’t say

Process: Students receive an email and a notification in their myfiu portal on their evaluation start date. A video tutorial is attached to every email notification along with written instructions.



FIU

Interesting difference

“As of AY 202122, faculty’s SPOTs scores—as reported to their department—will be computed using only the 8 state-mandated items. Second, the results for the remaining 18 items will be reported only to the faculty; Chairpersons, Deans, SPOTs Liaisons, and other designees will only have access to the 8 state- mandated items and student comments.”



UF: <https://gatorevals.aa.ufl.edu/>

Online? Yes. And can be done in class online

Not forced response

Mobile Friendly? Doesn't say if it is mobile friendly

Faculty instructions to increase response rate? Yes

Justification for SPOT included? Yes

Includes syllabus language and guidelines for student feedback

Open 2 weeks

*Opening Dates: Day after the last day to drop or withdraw without failing grades

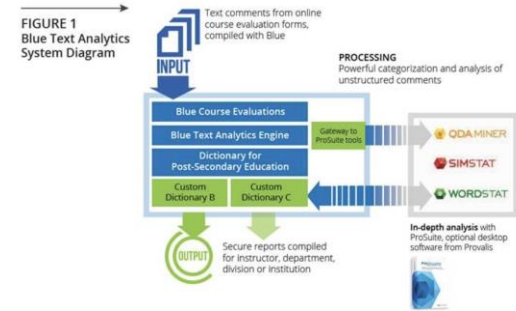
*Closing Dates: Day before the beginning of the final exam period or prior to the final examination if it is earlier

*Faculty Result Availability Date: Day after final grades are available to students on ONE.UF

Can students go back and change answers? Doesn't say

Offers [Text Analytics White Paper](#) – word cloud of comments and other cool things.

Customizable: Additional item response sets for college / department



Bill is going to speak more on UF as that relates to the task force

University	Online	Forced Response	Faculty Instructions	Customizable	Mobile Optimized	Open Period
FSU	Yes, and a paper option	No	Yes	Yes	Doesn't say	2 weeks
FAU	Yes	No	Yes	No	Yes	1 week
USF	Yes	No	Yes	No	Doesn't say	2.5 weeks
UF	Yes	No	Yes	Yes	Yes	2 weeks
FIU	Yes	No	No	No	Very	2 weeks



The History of the Student Perception of Instruction and UCF's Faculty Senate

Student Perception of Instruction and the Faculty Senate (1973-2022)

1970's (FTU then UCF) – Under governance of State Board of Regents

- Senate recommends seven areas to be evaluated to satisfy BOR – Dept. level input
- Senate recommends several requirements (i.e. how many courses per term and who would pay for cost)
- Senate recommends a evaluation form proposed by Student Government (fails at Senate, 1978)

1980's – Still under BOR

- Student Evaluation form proposed (again) and passes, 1982
- Senate concerned about blank forms and blank answers, asked for blank answers to be removed (approved)

1990's – Still under BOR

- BOR mandates 8 core questions in SPI (renames to perception of instruction)
- New form adopted and FCTL was also established (parallel), 1996



Faculty Senate

UNIVERSITY OF CENTRAL FLORIDA

Student Perception of Instruction and the Faculty Senate (1973-2022)

2000's – Board of Regents dissolved, and Board of Governors (and BOT) established

- Senate recommends SPI continue to be used, but that peer evaluation, teaching portfolios and other measures should be used (approved) – 2001
- Students asked for more access to SPI data; Senate requests that a summary sheet be posted online (returned to committee in 2002)

2010's – BOG/BOT era

- Revised form proposed by Senate, passes (2011)
- Resolution on how few students respond, passes (2011)
- Resolution on expanding the period for submitting the form from 10 days to 15 days (2011)
- Newly revised form in resolution approved (2012)
- Resolution concerned with low response rates, asks for incentives to increase student response rates (denied by Provost Waldrop, 2013)



Faculty Senate

UNIVERSITY OF CENTRAL FLORIDA

Student Perception of Instruction and the Faculty Senate (1973-2022)

RECENT History:

2018-2019 Ad hoc committee on SPI established

- Students, FCTL, faculty, senators all engaged in discussion of SPI and process issues
- Students passed resolutions in SGA senate in 2017 and 2018 asking for better access to SPI data

Resolution passed and signed in 2019 that recommends the following:

1) Short-Term

- a) Make the SPI results easily accessible to students and faculty on myUCF.
- b) Provide students with information to interpret the data and a disclaimer regarding bias.
- c) Pilot making the evaluations optional to complete with active reminders.
- d) Add a link to the email sent to students to the SPI results so students have a purpose to complete the survey.

2) Long-Term

- a) Form a Task Force to include the Faculty Center for Teaching and Learning, students from SGA, administration, Center for Distributed Learning, faculty senators, and faculty to review questions, validity, recommend better methods to evaluate teaching, and define the role of SPI in the evaluation.
- b) Purchase a software package to easily capture and report SPI data.



Faculty Senate

UNIVERSITY OF CENTRAL FLORIDA

Student Perception of Instruction and the Faculty Senate (1973-2022)

University of Florida (SUS peer example)

UF instituted a new evaluation system (Gator Evals) - <https://gatorevals.aa.ufl.edu>

I encourage you to review this website – lots of information on the process and its impact on constituents (faculty, students, administrators)

- Results are available to faculty very soon after grades are submitted (e.g. April 9th for Spring 2022)
- Students (and the public) are able to view these results, with the exception of free responses
- Colleges and Departments are able to choose from a series of additional questions (beyond the core eight questions) based on their needs for the courses
- Mid-semester evals are optional for faculty to request and include in their report
- Using a software platform that has also been adopted by Ohio State University, Michigan and over 500 other institutions

(Explorance - <https://explorance.com/products/blue/>)



Faculty Senate

UNIVERSITY OF CENTRAL FLORIDA

Questions?

**To provide us
with feedback on
the SPI:**

